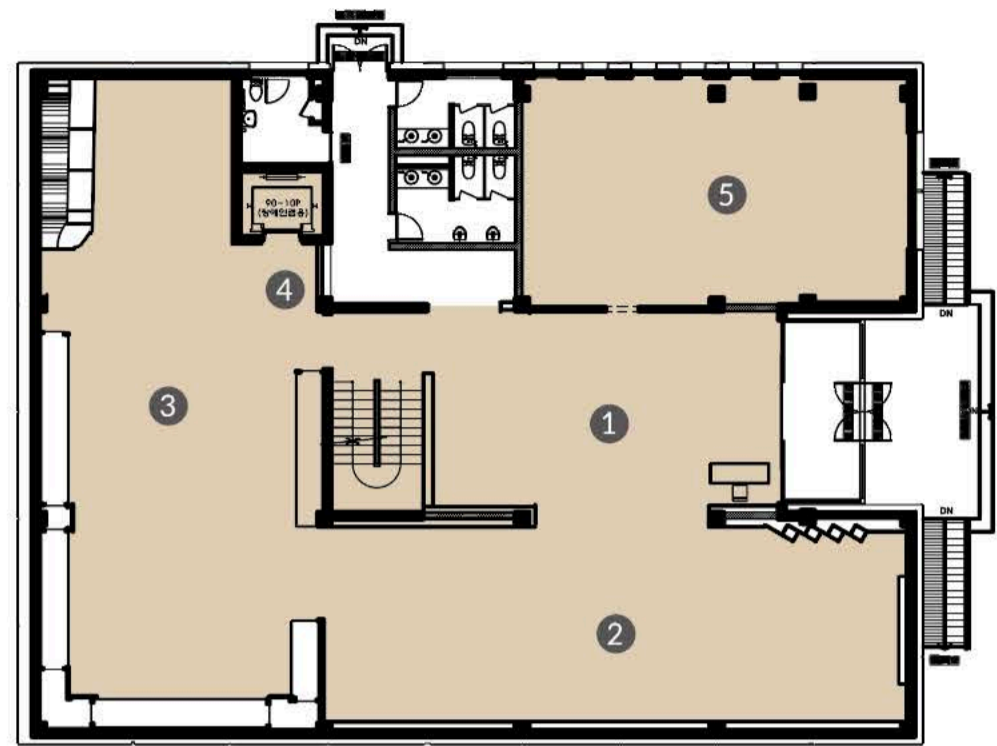


◆◆◆ Facilities

* 1st floor

Lobby·Exhibition Hall 1·Exhibition Hall 2·Special Exhibition Hall

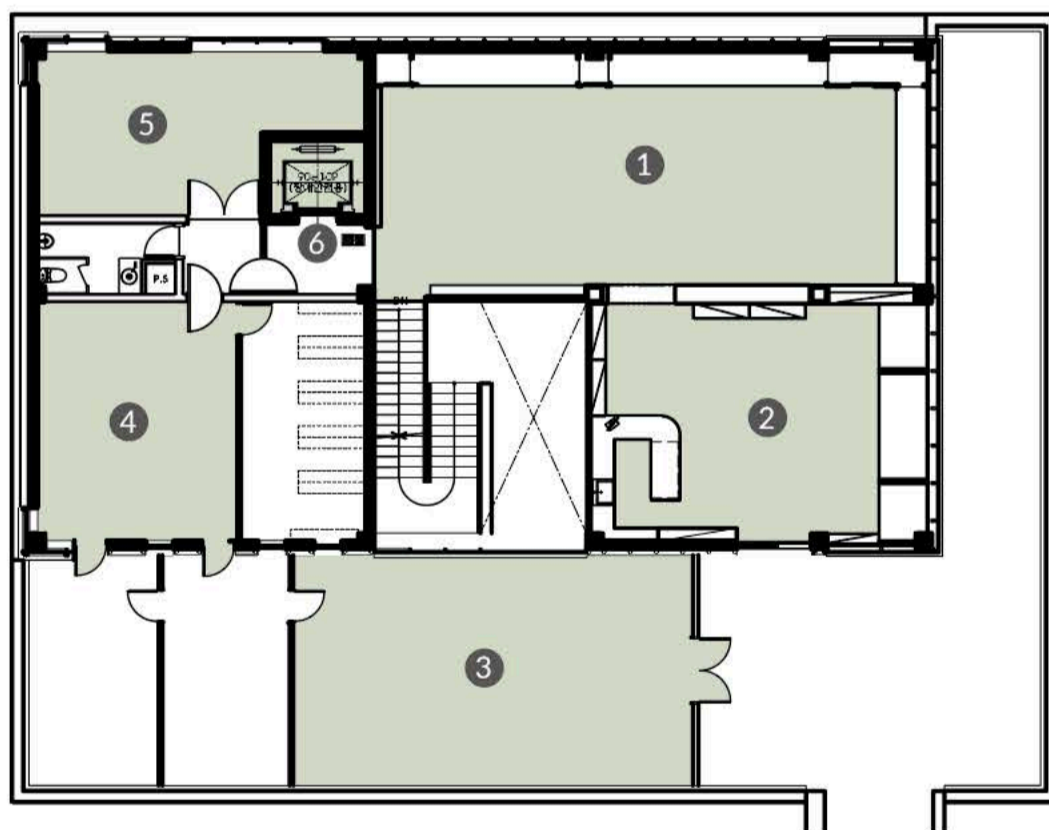


Entrance

- ① Lobby
- ② Exhibition Hall 1
- ③ Exhibition Hall 2
- ④ Elevator
- ⑤ Special Exhibition Hall

* 2nd floor

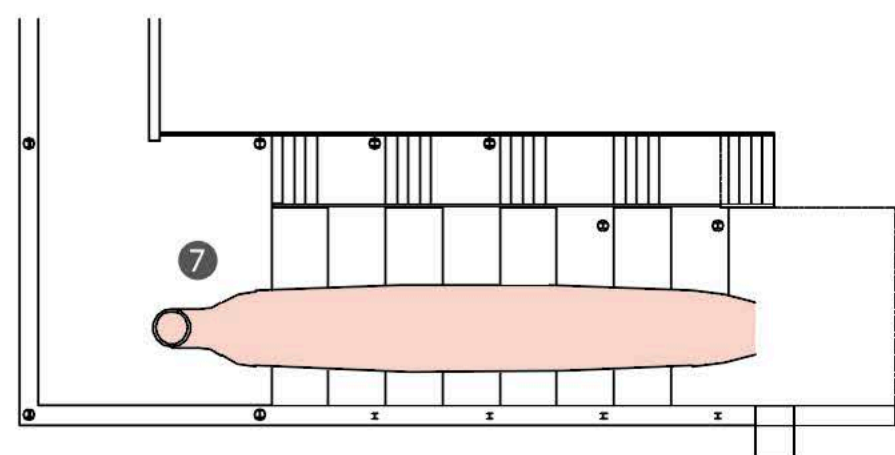
Exhibition Hall 3·#CERA·Storage·Ceramics Experience Center·Offices



- ① Exhibition Hall 3
- ② #CERA
- ③ Storage
- ④ Ceramics Experience Center
- ⑤ Offices
- ⑥ Elevator

* 2nd Building

Traditional kiln



⑦ Traditional kiln

Gimhae Buncheong Ceramics Museum

◆◆◆ How to reach us



+ If you drive

Namhae Expressway → Jillye IC → Jillye Myeon (take a left)

+ Transit

City bus : Gimhae Bus Terminal → Jillye Agricultural Cooperative
(Bus no. 44, buses depart available every 30 to 40 minutes)

Express Bus : Busan West Bus Terminal (Sasang) → Jillye Agricultural Cooperative

+ Light metro

Disembark at Bonghwang Station
(Take City Bus no. 44 to Jillye Agricultural Cooperative)

+ KTX

Jinyeong Station → Jillye Agricultural Cooperative
(Buses No. 13 or 15, taking about 30 minutes/ 10 minutes by taxi)

◆◆◆

Gimhae Buncheong Ceramics Museum

275-35, Jillye-ro, Jillye-myeon, Gimhae-si

☎ 055)345.6036~7

🏠 <http://doja.gimhae.go.kr>

🌐 buncheong_museum

Gimhae Buncheong Ceramics Museum



김해분청도자박물관
GIMHAEBUNCHEONG CERAMICS MUSEUM

◆◆◆ History

2009. 05
Opening of
Gimhae Buncheong
Ceramics Museum

2018. 08
Registered as a
Class 2 Museum
(exhibition center)

2019. 01
Changed the name to
Gimhae Buncheong
Ceramics Museum

2019. 05
Expanded the
Ceramics
Experience Center

2019. 04
Selected as the participating
organization for the public call for
Small-but-Strong Potential Tourist
Destination Identification and
Cultivation Project (Gyeongnam).

2020. 07
Named as one of the
'Top 100 Untact Tourist
Destinations.'

2021. 12
Museum facilities
improvement
work began

2022. 05
Museum reopened

◆◆◆ Visitor Information

* Hours

09:00~18:00
(Visitors may enter the museum 30 minutes before the closing time)

* Holidays

Every Monday, January 1st, Lunar New Year's Day, and Chuseok
(only the actual holidays. However, if the holiday falls on a Monday,
the first following business day.)

* Admission fee

free

* Visitor Rules

- + No foods or drinks can be brought inside. No pets are allowed except for guide dogs.
- + Before entering the exhibition halls, turn off the mobile phones or switch them to vibration mode.
- + Stay quiet in the exhibition halls. Refrain from running.
- + Never touch the exhibitions or do anything that may damage the exhibitions.
- + Taking photos or videos using a flash or a tripod or taking photos/videos for a commercial purpose is prohibited.

* Cover image: A piece of Buncheong Ceramics with 'Gimhae' engraved,
excavated from Gimhae Sangdong Buncheong Ceramics Kiln site.



What is a Buncheong Ceramic?

A Buncheong Ceramic is a type of ceramic that is made by covering grey or grayish black clay with white clay and glazing it before firing.

The name Buncheong Ceramics originated from Yooseop Goh (1905 - 1944), an art history during the Japanese Occupation Era, who coined the term Bunjanghoecheongsagi (粉粧灰靑沙器) to name the ceramics which resemble Cheongja or Baekja ceramics in terms of the forms, decoration, and color of glaze but differ from them in other ways. The term was picked up by other scholars, who coined the term Buncheong Ceramic as an abbreviated term.

Buncheong Ceramics date back to the late 14th century, when these ceramics began to appear following the invention of Cheongja and were produced for over 150 years until the early 16th century. Buncheong Ceramics are known to be the homiest and most folkish of all Korean ceramics.



The Ceramic Culture of Gimhae

The ceramic culture of the Gimhae region dates back to the neolithic ceramics, followed by various types of ceramics, such as Gaya ceramics, Goryeo Cheongja, Joseon Buncheong Ceramics, and Baekja, over ten thousand years.

In the Joseon Dynasty, the kilns to fire Buncheong Ceramics and Baekja were scattered across the country, and many historical kiln sites were confirmed in Gimhae, as well.

Especially, Gimhae had sites of ceramic production, responsible for supplying central government offices with ceramics until an official government ceramic product site was established in Gwangju, Gyeonggi-do, in the late 15th century.

One of the best-known of such sites in the region is the 'Gimhae Sangdong Buncheong Ceramics Kiln Site.'

* Gimhae Sangdong Buncheong Ceramics Kiln site - Gyeongnam Historical Heritage No. 288

- Location : 503, Daegam-ri, Sangdong-myeon, Gimhae-si
- Historical sites found : One kiln site and three waste disposal sites
- Active period : 1390 - 1470s
- Note

- Many relics which bear the names of the region and the public offices, such as Gimhae or Jangheunggo, engraved were found in these sites

- They matched the historical documents and were confirmed to be the production sites of Buncheong Ceramics to be used by the public offices of the Joseon Dynasty



A piece of
Buncheong Ceramics with
'Gimhae' engraved



Regular Exhibition Halls

* Exhibition Hall 1 : Ceramic Culture Hall

+ Ceramics

The definition and types of ceramics
The history of ceramics in Gimhae

+ Buncheong Ceramics

The definition and history of Buncheong Ceramics, production process
The historical sites of Buncheong Ceramics production in South Korea

* Exhibition Hall 2 : Buncheong Ceramics Hall

Many relics bearing the engraved markings of Gimhae, Jangheung, and Saseon, etc., are in display

* The Buncheong Ceramics kiln sites in the Gyeongsang region

An introduction to the representative Buncheong Ceramics kiln sites and relics from them, including Jangdae-ri in Hapcheon, Ungcheon in Changwon, Sangpan-ri/Uha-ri in Sangju, Sangjangan, and Hajangan sites in Gijang, etc.

* Exhibition Hall 3 : Gimhae Ceramics Hall

+ The ceramics culture of Gimhae

An introduction to the ceramics culture of Gimhae with the information on the current status of the kiln sites in Gimhae.

+ Gimhae's ceramics

An introduction to the famous kiln sites over the course of development from Cheongjas to Buncheong Ceramics and Baekja

+ The present and future of Gimhae's ceramics

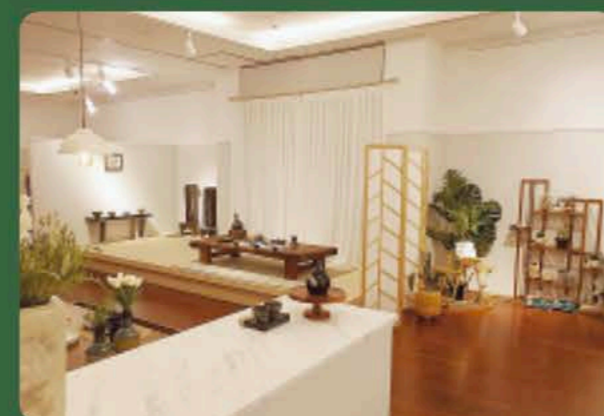
The history of modern ceramics culture of Gimhae and the future of Gimhae Ceramics.



Special Exhibition Hall

* Three to four special exhibition events every year.

ot only for relics but these exhibition halls are also used to hold the exhibition events for the present-day artists in the region.



#CERA

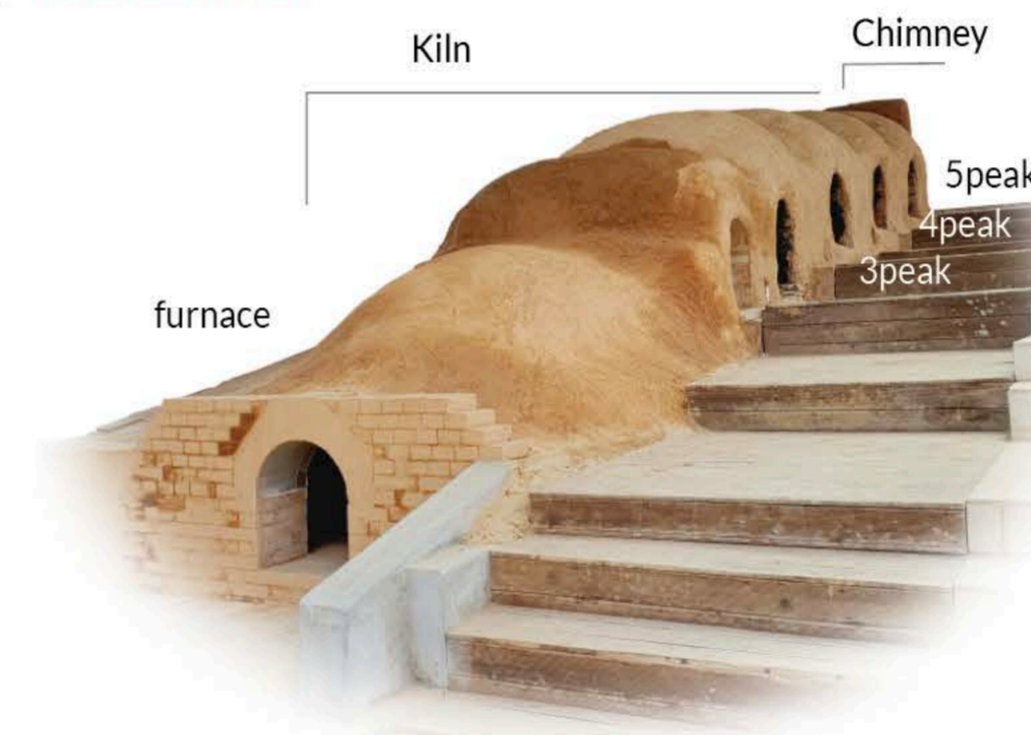
Museum Shop

- A place where the tea cups, mugs, coffee cups, and tea wares only from the Gimhae region are on display.
The opportunity to enjoy coffee or tea is offered only to those who purchased the ceramics.
Small-sized classes (tea ceremonies or coffee-related classes) are offered six to eight times a year.



2nd Building

* Traditional Kiln



Key Exhibitions



Buncheongsagi
Inhwamunihap



Buncheongsagi
Bakjimoranimoonbyeong



A Buncheong Ceramic stand
bearing the character '官';
meaning it is for official use.



Buncheong
Ceramic dishes

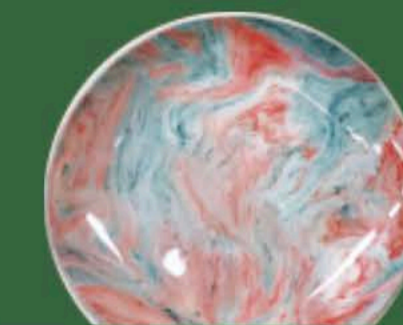


Ceramic Studio

A place for many fun ceramic experiences! Have a great time with ceramics of your own!

* Ceramic Experience

- Making a marbling dish Participation fee: KRW 15,000
- Making my own ceramics Participation fee: KRW 10,000
- Decorating my own mug Participation fee: KRW 6,000
- Decorating a ceramic doll Participation fee: KRW 6,000
- Decorating a ceramic tile frame Participation fee: KRW 5,000



Marbling dish

* Premium Class

A premium experience course where you create your own set of ceramics with an instructor, from a sketch to a completed piece of work.

Participation fee: 30,000 won (Booking needed by one week before the date of the experience. Weekday evening classes available.)

*Bookings available for after-work courses on weekday evenings.

* Book a space

through the website of the museum.



Education Program

* Gimhae Citizen's Pottery College

Admission : One class a year (a fifteen-week course)

Eligibility : Adults only (18 and older)

Description of the course: Basic pottery classes and special academic classes;
Trips to ceramic-related museums in other regions and well-known pottery villages.

* Doshirak: A fun time with ceramics

Period : Six to eight sessions a year

Eligibility : About seven people in each program

Description: One-session program (three hours) with tea ceremony experts to learn about tea ceremonies and tea-making, etc.



Cultural Events

* Firing up a Traditional Kiln

Period : once a year

Eligibility : Any citizen may participate (booking required)

Description : A fire-up event using a traditional kiln. A barbeque party using the charcoals used in the kiln is included.

